



APPLIED ELECTRONICS & COMPUTER TECHNOLOGY

Learn to install, maintain, and troubleshoot electronics and computer-based equipment

“Enrolling in the Applied Electronics and Computer Technology program at KVCC was an incredible experience for me.

The instructors taught me to use high-tech electronic equipment and computers in real-world scenarios.”

The Applied Electronics and Computer Technology program at KVCC prepares students with the technical knowledge and needed skills for careers in the installation, maintenance, support, and troubleshooting of electronic equipment, communication systems, computers, and computer networks. The AECT program emphasizes hands-on learning using the latest training equipment, innovative teaching techniques, and highly trained faculty members. The primary goal of the program is to ensure that each student is well prepared for entry into a technology-driven work force.

What Applied Electronics and Computer Technology graduates do:

Apple computer support	Computer network support
Electronic communication	Audio/video technology
Bio/medical electronics	Engineering technology

Students will learn:

Operating system architecture	Network setup and configuration
Electronics circuits and systems	Fiber optic systems
Data communication systems	Wireless connectivity

Applied Electronics and Computer Technology graduates work in:

Government agencies	Education organizations
Financial institutions	Manufacturing industry
Telephone/cellular companies	Cable companies



Program entry requirements:

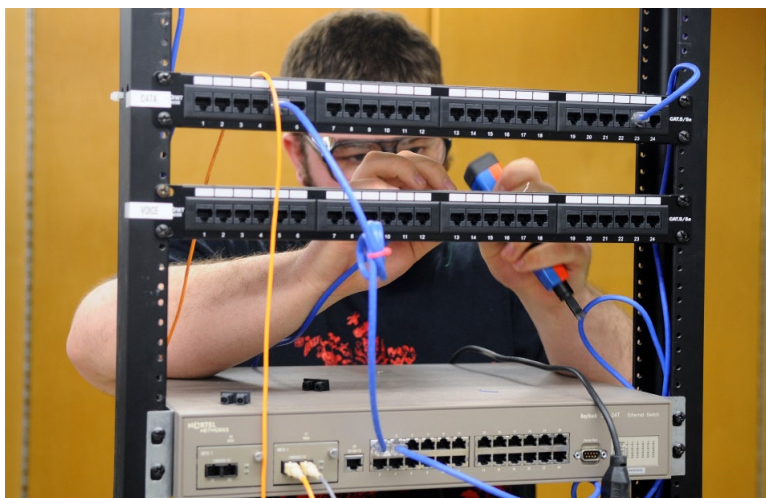
To see the entrance requirements for this program, please visit the pages ahead, and visit www.kvcc.me.edu/prereq

For further questions about this program, please contact Bill Dolan at:

aect@kvcc.me.edu

or go to:

www.kvcc.me.edu/aect



APPLIED ELECTRONICS & COMPUTER TECHNOLOGY

Course #	Course Title	Credits	Prerequisites (Co-requisites)
<u>Associate in Applied Science Degree</u>			
<u>FIRST SEMESTER</u>			
__ __	COM104 Introduction to Communication OR		
__ __	COM105 Interpersonal Communication.....	3	
__ __	ENG108 Technical Writing.....	3	Min. Accuplacer writing score of 74
__ __	ETC110* Computer Technology Fundamentals	3	Basic Computing and Microsoft Office skills
__ __	ETL113* Electrical Circuits I.....	3	(MAT114)
__ __	MAT114 Technical Math.....	3	Min. Accuplacer arithmetic score of 55
<u>SECOND SEMESTER</u>			
__ __	ETC119* Digital Electronics	3	ETL113
__ __	ETC125* Semiconductor Devices	3	(ETL114)
__ __	ETC250* Computer Technology Applications.....	3	ETC110
__ __	ETL114* Electrical Circuits II.....	3	ETL113
__ __	MAT117 College Algebra	3	High school algebra, min. Accuplacer algebra score of 75, or successful completion of MAT031
<u>THIRD SEMESTER</u>			
__ __	ETC212* Linux Operating Systems and Mobile Devices	3	ETC110
__ __	ETC220* Microprocessor Applications	3	ETC110, ETC119, ETC125
__ __	ETC225* Analog Circuits	3	ETC125
__ __	ETC240* Electronic Communication Systems.....	3	ETC119 (ETC225)
__ __	ETC244* Electronics Applications Lab	1	ETC119 (ETC225, ETC240)
__ __	PHY111 Elements of Physics	4	Minimum grade of "C" in MAT117 or MAT119
<u>FOURTH SEMESTER</u>			
__ __	ETC112* Apple Computer Support Essentials.....	3	ETC110
__ __	ETC211* Network Operating Systems	3	ETC110 (ETC241)
__ __	ETC241* Data Communication Systems.....	3	ETC110 (ETC245)
__ __	ETC245* Networking Applications Lab	1	(ETC241)
__ __	_____ Humanities Elective.....	3	
__ __	_____ Social Science Elective.....	3	
	TOTAL CREDITS	63	
<u>Computer Technology Certificate</u>			
__ __	ENG108 Technical Writing.....	3	Min. Accuplacer writing score of 74
__ __	ETC110* Computer Technology Fundamentals	3	Basic Computing and Microsoft Office skills
__ __	ETC112* Apple Computer Support Essentials.....	3	ETC110
__ __	ETC211* Network Operating Systems	3	ETC110 (ETC241)
__ __	ETC212* Linux Operating Systems and Mobile Devices	3	ETC110
__ __	ETC241* Data Communication Systems.....	3	ETC110 (ETC245)
__ __	ETC245* Networking Applications Lab	1	(ETC241)
__ __	ETC250* Computer Technology Applications.....	3	ETC110
__ __	MAT114 Technical Math.....	3	Min. Accuplacer arithmetic score of 55
	TOTAL CREDITS	25	

APPLIED ENGINEERING TECHNOLOGY

Course #	Course Title	Credits	Prerequisites (Co-requisites)
Associate in Applied Science Degree			
<u>FIRST SEMESTER</u>			
__ __	COM104 Introduction to Communication.....	3	
__ __	ENG101 College Composition	3	Min. Accuplacer writing score of 74
__ __	ETC110* Computer Technology Fundamentals	3	Basic Computing and Microsoft Office skills
__ __	ETL113* Electrical Circuits I	3	(MAT114)
__ __	MAT226 Precalculus	4	Minimum grade of “C” in MAT117
<u>SECOND SEMESTER</u>			
__ __	ETC119* Digital Electronics	3	ETL113
__ __	ETC125* Semiconductor Devices	3	(ETL114)
__ __	ETC250* Computer Technology Applications.....	3	ETC110
__ __	ETL114* Electrical Circuits II.....	3	ETL113
__ __	MAT227 Calculus I	4	MAT218 or MAT226
<u>THIRD SEMESTER</u>			
__ __	ETC212* Linux Operating Systems and Mobile Devices	3	ETC110
__ __	ETC220* Microprocessor Applications	3	ETC110, ETC119, ETC125
__ __	ETC225* Analog Circuits	3	ETC125
__ __	ETC240* Electronic Communication Systems	3	ETC119 (ETC225)
__ __	ETC244* Electronics Applications Lab	1	ETC119 (ETC225, ETC240)
__ __	PHY111 Elements of Physics	4	Minimum grade of “C” in MAT117 or MAT119
<u>FOURTH SEMESTER</u>			
__ __	ETC112* Apple Computer Support Essentials	3	ETC110
__ __	ETC211* Network Operating Systems	3	ETC110 (ETC241)
__ __	ETC241* Data Communication Systems	3	ETC110 (ETC245)
__ __	ETC245* Networking Applications Lab	1	(ETC241)
__ __	_____ Humanities Elective	3	
__ __	_____ Social Science Elective	3	
	TOTAL CREDITS	65	

This workforce product was funded by a grant awarded by the U.S. Department of Labor’s Employment and Training Administration. The product was created by the grantee and does not necessarily reflect the official position of the U.S. Department of Labor. The U.S. Department of Labor makes no guarantees, warranties, or assurances of any kind, express or implied, with respect to such information, including any information on linked sites and including, but not limited to, accuracy of the information or its completeness, timeliness, usefulness, adequacy, continued availability, or ownership.